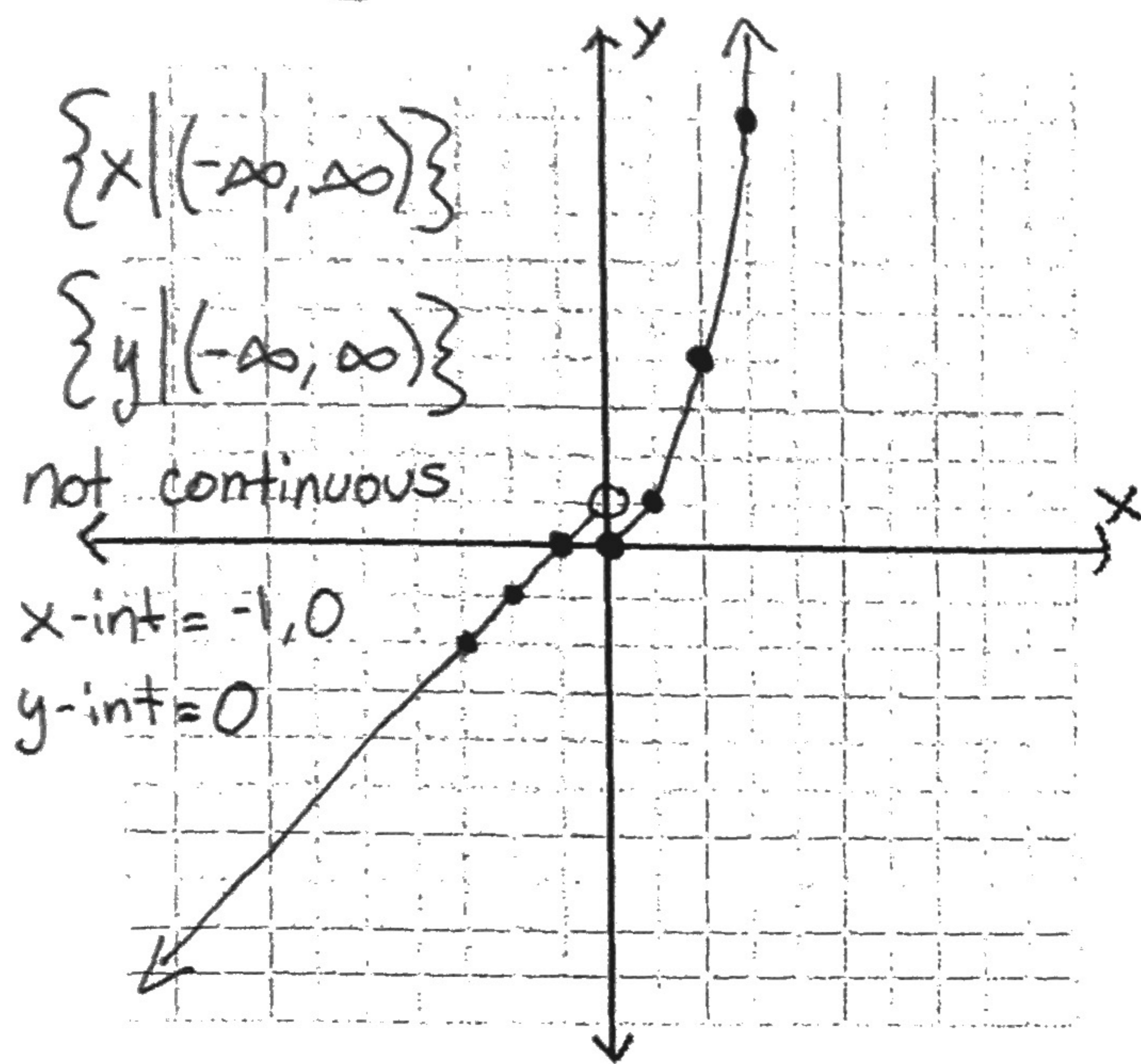
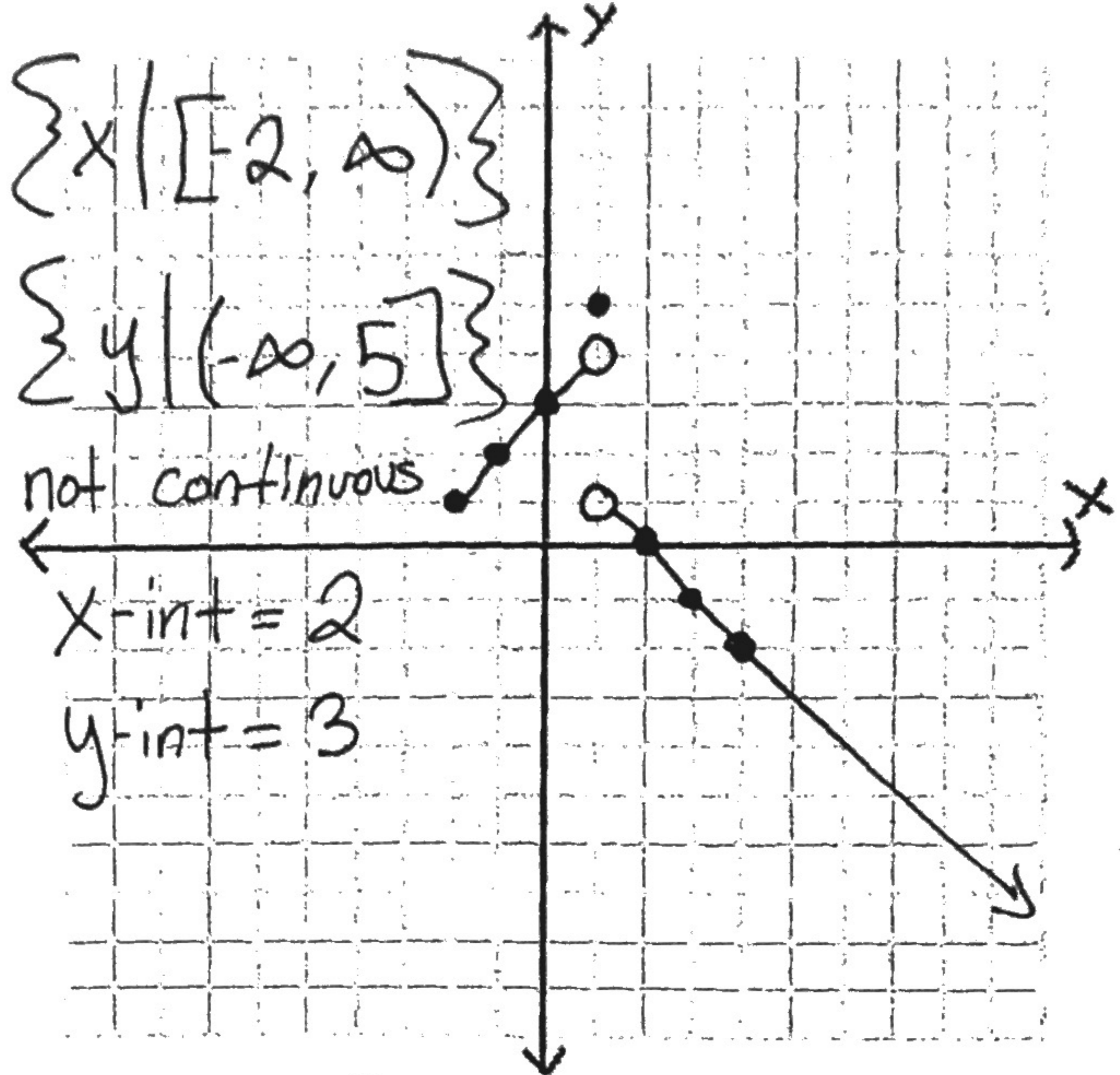


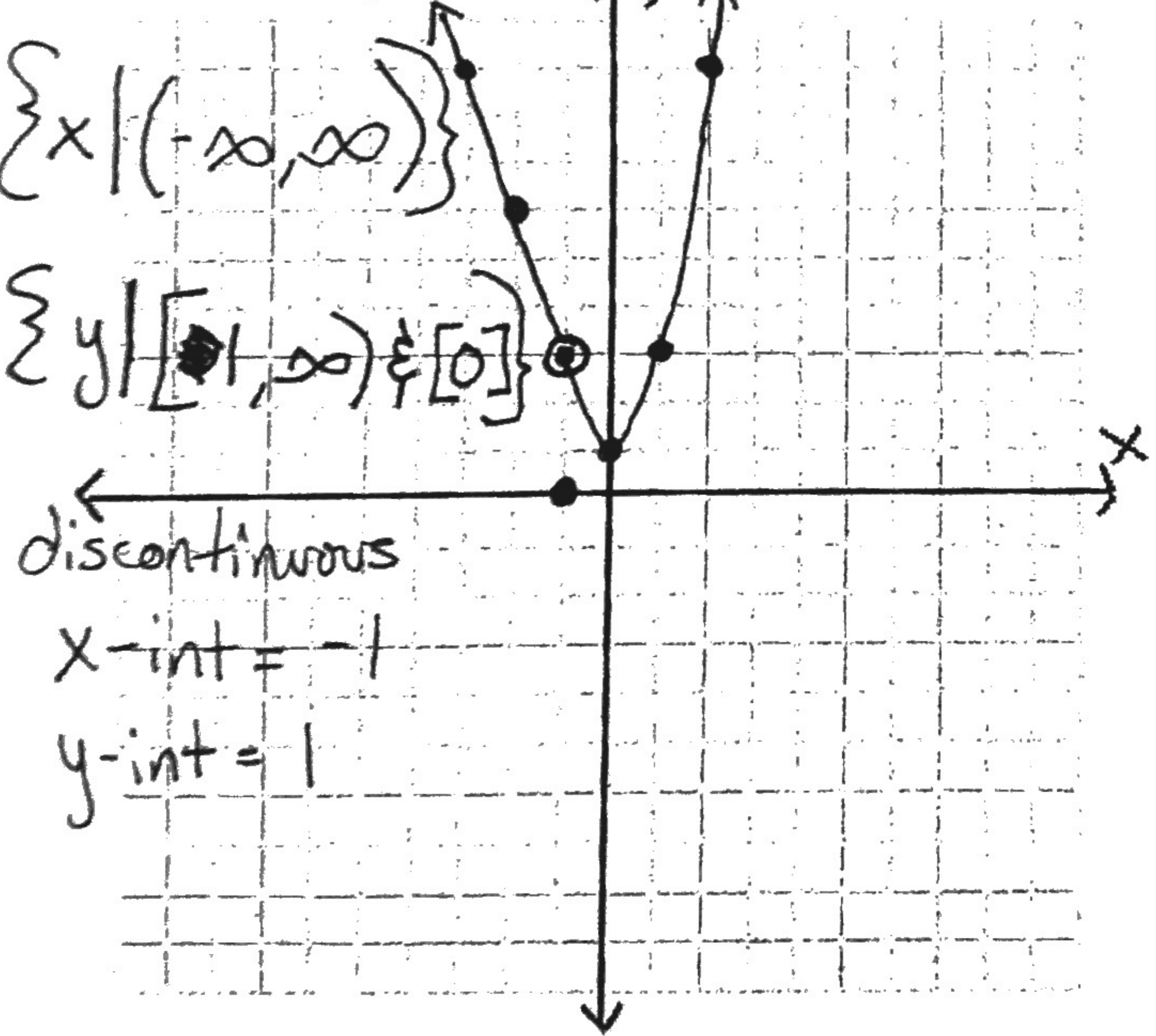
$$① f(x) = \begin{cases} 1+x & x < 0 \\ x^2 & x \geq 0 \end{cases}$$



$$② f(x) = \begin{cases} x+3 & -2 \leq x < 1 \\ 5 & x = 1 \\ -x+2 & x > 1 \end{cases}$$



$$③ f(x) = \begin{cases} -3x & x < -1 \\ 0 & x = -1 \\ 2x^2 + 1 & x > -1 \end{cases}$$



$$④ f(x) = \begin{cases} 2x-4 & -1 \leq x \leq 2 \\ x^3-2 & 2 < x \leq 3 \end{cases}$$

